



SCC500A

Crawler Crane

50 Tons Lifting Capacity

Quality Changes the World



Max. lifting moment: 170t·m

Max. boom: 46m

Max. boom + fixed jib: 37m + 15.25m

The parameters, pictures and standard/optional equipment are only for reference in this brochure, the actual machine is based on the effective price list and contract.

■ www.sanyglobal.com

Courtesy of CraneMarket.com



Crawler Crane Series SCC500A

P03

Main
Characteristics

- Product Specification
- Safety Device

P09

Technical
Parameters

- Major Performance & Specifications
- Outline Dimension
- Transport Dimension
- Transport Plan

P16

Configurations

- H Configuration
- FJ Configuration

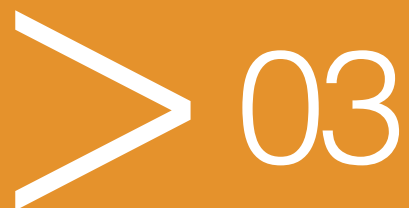


SCC500A
SANY CRAWLER CRANE
50 TONS LIFTING CAPACITY

QUALITY CHANGES THE WORLD

Main Characteristics

- Page 04 Product Specification
- Page 07 Safety Device



Product Specification



Engine (Standard Offering)

- Model: WP4.1NG175E300 Diesel Engine;
- Type: 4-stroke, water-cooled, vertical in-line, direct injection, turbo-charger, intercooler, complied with Chinese Non-road Tier III Emission Standard;
- Displacement: 4.1L;
- Rated power: 129kW/2300rpm;
- Operation power: 123kW/1800rpm;
- Max. Torque: 680N·m/1400-1600rpm;
- Starter: 24V-4.75kW.

Electrical Control System

- Self-developed SYIC-II integrated control system is adopted with higher integration, precise operation and reliable quality;
- Control system consists of power system, engine system, main control system, LMI system, auxiliary system and safety monitoring system. CAN BUS is used for data communication between controller, monitor and the engine;
- Monitor: the working parameters and status are shown on the monitor, such as the engine speed, fuel volume, engine oil pressure, servo pressure, engine working hours, lifting conditions and boom angle.

Hydraulic System

- Main pumps: open variable displacement piston pumps are adopted to provide oil supply for main actuators of main machine;
- Gear pump: dual-gear pump for swing and control circuit;
- Control: main pump adopts positive flow proportional control; main load winch motor adopt piston motor of variable displacement; aux. load winch and boom hoist winch motor adopts piston motor of fix displacement. The operating components adopt two cross hydraulic handles, one dual travel pedal control valve, to control various actuators proportionally;
- Way of cooling: heat exchanger, fan core and multi-stage cooling;
- Filter: large flow, high precision filter, with bypass valve and transmitter, which can remind the user to replace the filter element in time;
- Max. pressure of system: 34MPa;
- Main/aux. load hoist, boom hoist and travel system: 34MPa;
- Swing system: 24MPa;
- Control system: 4.5MPa;
- Hydraulic Tank Capacity:305L.

Main and Aux. Load Hoist Mechanism

- Main and aux. hoist winches are driven separately by motor via gearbox. Operating winch handle can control the winch to rotate to two directions, which are lifting and lowering of hook. Excellent inching function is equipped on the machine;
- Drums with fold-line grooves can ensure the wire rope reeved in order in multilayers;
- Non free fall for main and aux. load hoist and it can be offered as optional.

Main Load Hoist Mechanism	Drum diameter	406mm
	Rope speed	0~125m/min
	Wire rope diameter	Φ16mm
	Wire rope length of main load hoist	180m
	Rated single line pull	5t
Auxiliary Load Hoist Mechanism	Drum diameter	406mm
	Rope speed	0~125m/min
	Wire rope diameter	Φ16mm
	Wire rope length of auxiliary load hoist	120m
	Rated single line pull	5t



Product Specification

Boom Hoist Mechanism

- Boom hoist winches are driven separately by motor via gearbox. Operating winch handle can control the winch to rotate to two directions, which are lifting and lowering of boom;
- Drums with fold-line grooves can ensure the wire rope reeved in order in multilayers.

Boom hoist mechanism	Drum diameter	355mm
	Rope speed	0~60m/min
	Wire rope diameter	Φ16mm
	Wire rope length of boom hoist	100m

Swing Mechanism

- Swing brake adopts wet, spring loaded, normally-closed brake, and braking through spring force;
- With integrated cushion valve, the swing system has free slip function to realize steady swing start and control, showing outstanding microinching performance; Unique swing cushion design ensures more stable braking;
- Swing drive: external engaged swing drive with 360° swing range, and the max. swing speed is 2.5rpm;
- Swing lock: cylinder lock can ensure the upperworks locked securely on four directions after work or during transport;
- Swing ring: single row ball bearing.

Cab and Control

- Novel operator's cab with fashionable profile, nice interior and large glass window. There are low and high-beam lights, back-view mirror, heater and A/C, radio and other functions. The layout of seat, handles, control buttons are designed with ergonomic principles to make operation more comfortable;
- Cab layout: Integrated 7-inch touch screen, man-machine interaction interface are more perfect;
- Armrest box: on the left and right armrest box are control handles, electrical switches, emergent stop and ignition switch. The armrest box can be adjusted along with the seat;
- Seat: multi-way and multi-level floating adjustable seat with unload switch;
- A/C: cool and heat air; optimized air channels and vents;
- Multiple cameras can present at the same time to realize real-time monitoring of machine traveling, right crawler, conditions behind the counterweight and surrounding the machine.

Counterweight

- Counterweight tray and blocks are in stack for easier assembly and transport;
- Total rear counterweight: approximately 12.4t;
- Rear counterweight: counterweight tray 7t×1, counterweight block 5.4t×1.

Upperworks

- High-strength steel weld framework, with no torsion or deformation. The parts are laid out in the way that is easier for maintenance and service.

Product Specification



Travel System

- Independent travel driving units are adopted for each side of the crawler, to realize straight walking and turning driven by travel motor through gearbox and drive wheel;
- Travel Speed: both high and low speed are set, and the highest speed is 2.2km/h;
- Gradeability: 40%.

Travel Brake

- Concealed wet type and spring-loaded type normally engaged brake, spring force braking, oil pressure released.

Crawler Extension and Retraction

- The crawlers can extend and retract via cylinders. During Work Mode, the crawlers must be extended, and be retracted during transport with crawlers on.

Crawler Tensioning

- Spring tensioner with auxiliary hydraulic cylinder regulates the tension degree through charging grease, and the spring can perform buffer and protection function when traveling.

Steering System

- It can realize single track turning and pivot turning.

Track Shoe

- Excavator three-reinforcement chain link track shoe is adopted, which is made of high strength alloy cast steel, has stronger road holding capacity and longer service life, and can adapt to various harsh road conditions.. Width 700mm, Qty 62x2.

Track Roller

- Maintenance-free track roller.

Operating Equipment

- All chords are high-strength steel tubes, and the boom/jib top sheaves are made of high-strength anti-wearing Nylon material protecting wire rope. The hooks are installed with milled welded steel sheave.

Boom

- Lattice structure. The chord adopts high-strength structural tube and each section is connected through pins;
- Basic boom: 5.5m boom base + 1.5m tapered insert + 3m boom top;
- Boom insert: 3m×2, 6m×3,6m(small)×2;
- Boom length: 10m~46m.

Fixed jib

- Lattice structure. The chord adopts high-strength structural tube and each section is connected through pins;
- Basic boom: 3.05m boom top + 3.05m boom base;
- Boom insert: 3.05m×3;
- Fixed jib length: 6.1m~15.25m;
- Max. boom + jib: 37m + 15.25m.

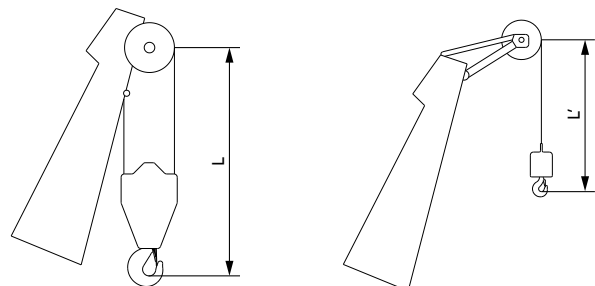
Extension Jib

- The extension jib is a welded structure connected to the boom top by pins, used for auxiliary hook;
- Extension jib length: 0.8m.

Hook Block

- 30t hook block, four sheaves;
- 5t ball hook.

Hook limitation height



Hook	L	Hook	L'
30t	3.2m	5t	2.7m



Safety Device

Assembly Mode/Work Mode Switch

- In Assembly Mode, certain safety devices are disabled to facilitate crane assembly;
- In Work Mode, all safety devices activate to protect the operation.

Emergent Stop

- In emergent situation, this button is pressed down to cut off the power supply of the whole machine and all actions stop.

Load Moment Indicator (LMI)

- It is an independent computerized safety control system. LMI can automatically detect the load weight, work radius and boom angle, and present on the display the rated load, actual load, work radius and boom angle. In normal operation, the LMI can make a judgment and cut off automatically if the crane moves towards dangerous direction. It can also perform as a black box to record the lifting information;
- It is composed of monitor, angle sensor, force sensor and other parts.

Over-hoist Protection of the Main/ Auxiliary Load Hoist

- Over-hoist protection device comprises limit switch and weight on boom top, which prevents the hook lifting up too much. When the hook lifts up to the limit height, the limit switch activates, buzzer on the right control panel sends alarm, failure indicator light starts to flash and the hook hoisting action is cut off automatically.

Over-release Protection Device of the Main/Auxiliary Load Hoist

- It is comprised of activator in the drum and proximity switch to prevent over release of wire rope. When the rope is paid out close to the last three wraps, the proximity switch acts, and the system sends alarm through buzzer and show the alarm on the monitor, automatically cutting off the winch action.

Function Lock

- If the function lock level is not in work position, all the other handles won't work, which prevents any mis-operation caused by accidental collision.

Boom Hoist Drum Lock

- Boom luffing lock switch is designed to lock the boom luffing winch when it doesn't work, so as to prevent mis-operation. Boom hoist winch pawl can automatically respond when the control handle moves; and the pawl locks the drum when the handle returns to neutral position, so that the boom can stay safely when not working.

Swing Lock

- Swing Lock can lock the lowerworks and upperworks together.

Boom Limit Device

- When the boom elevation angle reaches the upper limit, the buzzer sounds and boom action is cut off. This protection is two-stage control ensured by both LMI system and travel switch.

Back-stop Device

- Its major components are nesting tubes and spring, in order to buffer the boom backlash and prevent further tipping back.

Hook Latch

- The lifting hook is installed with a baffle plate to prevent wire rope from falling off.

Safety Device



Tri-color Load Indicator

- The load indication light has three colors, green, yellow and red, and the real time load status is presented on the display. When the actual load is smaller than 90% of rated load, the green light is on; when the actual load is larger than 90% and smaller than 100%, the yellow light is on, the alarm light flashes and sends out intermittent sirens; when the actual load reaches 100% of rated load, the red light is on, the alarm light flashes and sends out continuous sirens. When the actual load reaches 102% of the rated load, the system will automatically cut off the crane's dangerous operation.

Alarm Light

- When the machine is powered on, the alarm light will work when time comes, so as to warn people around.

Swing Indicator Light

- The swing indicator light flashes during traveling or swing.

Illuminating Light

- The machine is equipped with short-beam light in front of machine, front angle adjustable far-beam light, lamps in operator's cab, lighting devices for night operation, so as to increase the visibility during work.

Rearview Mirror

- It is installed on the left of the operator's cab and at the front handrail of the sheet metal for monitoring the rear part of the machine.

Pharos

- Pharos is mounted on the top of boom/jib to indicate the height.

Anemometer

- It is mounted on the top of boom/jib, indicating the height.

Electronic Level Gauge

- It displays the tipping angle of crane on the monitor in real time and sends out alarm to the operator automatically when the angle is out of limit.

Engine Power Limit Load Adjustment and Stalling Protection

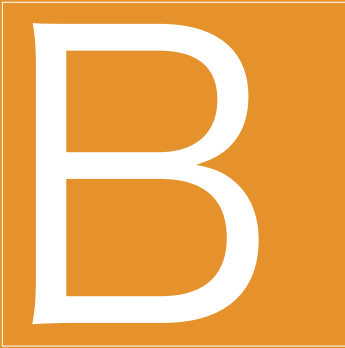
- The controller monitors the engine power to prevent engine getting stuck and stalling.

Engine Status Monitoring

- The engine status will be presented, such as engine coolant temperature, fuel volume, total work hours, engine oil pressure, engine speed, battery charging and voltage.

Monitoring System

- Remote Monitoring system is a standardized offering to provide functions like GPS locating, GPRS data transfer, machine status inquiry and statistics, operating data monitoring and analysis, remote diagnosis of failures.

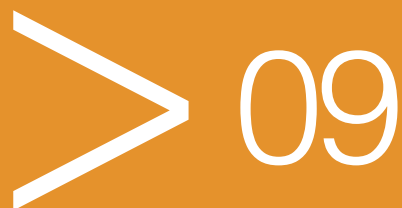


SCC500A
SANY CRAWLER CRANE
50 TONS LIFTING CAPACITY

QUALITY CHANGES THE WORLD

Technical Parameters

- Page 10 Major Performance & Specifications
- Page 11 Outline Dimension
- Page 12 Transport Dimension
- Page 15 Transport Plan

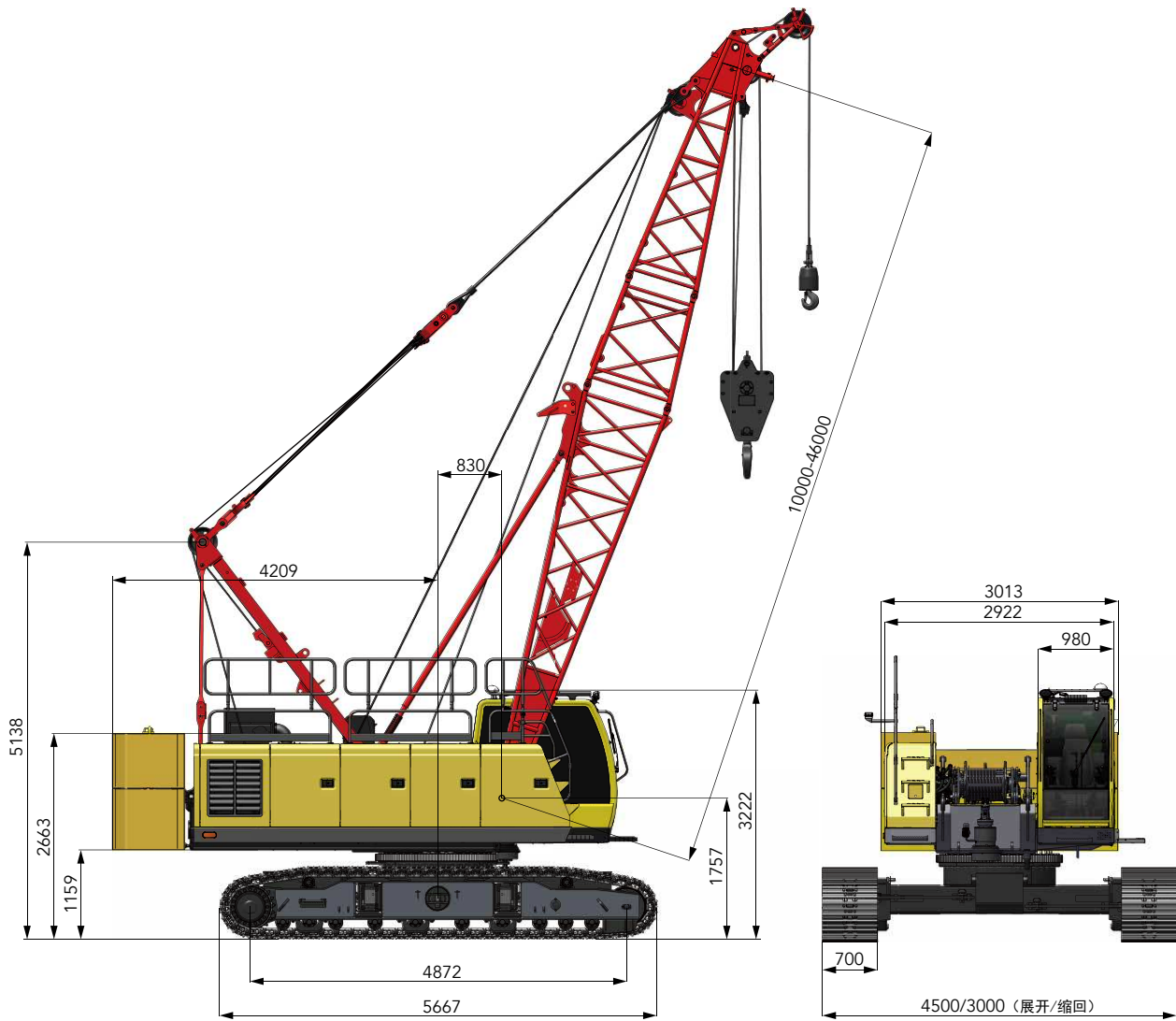


Major Performance & Specifications

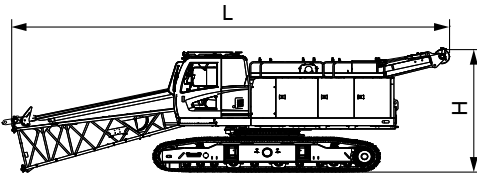
Major Performance & Specifications of SCC500A			
Performance Indicators		Unit	Parameter
Boom Configuration	Max. rated lifting capacity	t	50
	Largest lifting moment	t·m	170
	Boom length	m	10~46
Fixed jib Configuration	Max. rated lifting capacity	t	5
	Jib length	m	6.1~15.25
	Max. boom + jib	m	37+15.25
Speed	Rope speed of main winch	m/min	0~125
	Rope speed of aux. winch	m/min	0~125
	Rope speed of boom hoist winch	m/min	0~60
	Swing speed	rpm	0~2.5
	Travel speed	km/h	0~2.2
Wire rope	Main load hoist wire rope: diameter × length	φ mm × m	16×180
	Aux. load hoist wire rope: diameter × length	φ mm × m	16×120
	Rated single line pull of main/aux. load hoist wire rope	t	5
Engine	Model	\L	WP4.1NG175E300
	Rated power/revolution speed	kW/ rpm	129/2300
Transport Parameters	Max. set speed rpm 1800	t	39.1
	Rear counterweight	t	12.4
	Transport weight of basic machine (with crawlers and boom base)	t	25.7
	Machine transport dimension (with crawlers and boom base) L×W×H	mm	11035×3000×3250
Other specifications	Average ground pressure (basic boom)	MPa	0.056
	Gradeability	%	40

Unit: mm

Outline Dimension



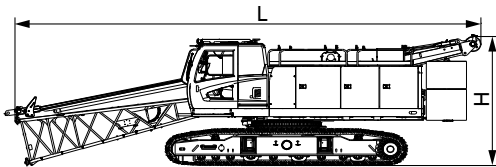
Transport Dimension



Basic Machine Mode 1 (with carbody counterweight)

×1

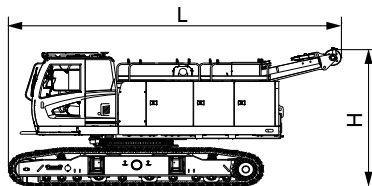
Length (L)	11.00m
Width (w)	3.00m
Height (H)	3.30m
Weight	25.7t



Basic Machine Mode 2 (with carbody counterweight)

×1

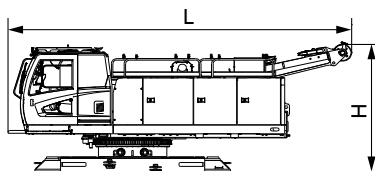
Length (L)	11.00m
Width (w)	3.00m
Height (H)	3.30m
Weight	38.1t



Basic Machine Mode 3

×1

Length (L)	7.39m
Width (w)	3.00m
Height (H)	3.30m
Weight	22.8t



Basic Machine Mode 4

×1

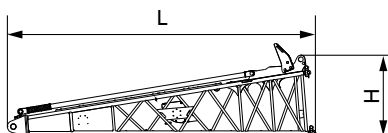
Length (L)	7.13m
Width (w)	3.00m
Height (H)	2.90m
Weight	13.1t



Track frame

×2

Length (L)	5.67m
Width (w)	0.83m
Height (H)	0.94m
Weight	4.85t

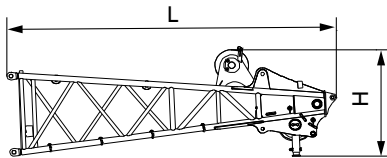


Boom base

×1

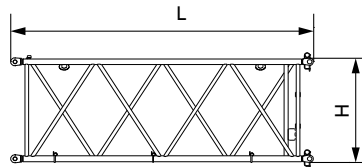
Length (L)	5.70m
Width (w)	1.15m
Height (H)	1.41m
Weight	0.7t

Transport Dimension



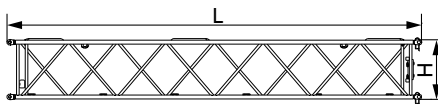
Boom top × 1

Length (L)	3.51m
Width (w)	0.95m
Height (H)	1.23m
Weight	0.39t



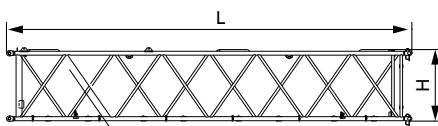
3m boom insert × 2

Length (L)	3.10m
Width (w)	1.15m
Height (H)	1.17m
Weight	0.19t



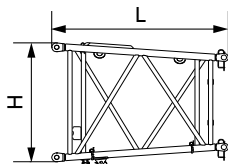
6m boom insert (small) × 2

Length (L)	6.10m
Width (w)	0.95m
Height (H)	0.96m
Weight	0.29t



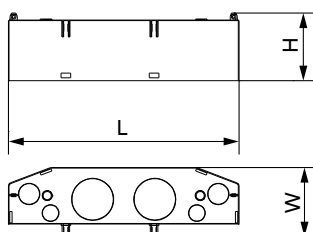
6m boom insert × 3

Length (L)	6.10m
Width (w)	1.15m
Height (H)	1.17m
Weight	0.34t



1.5m tapered insert × 1

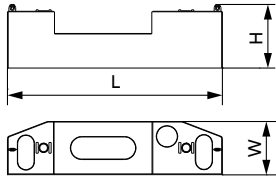
Length (L)	1.58m
Width (w)	1.15m
Height (H)	1.17m
Weight	0.11t



Counterweight tray × 1

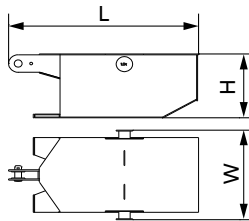
Length (L)	3.00m
Width (w)	1.15m
Height (H)	0.89m
Weight	7.0t

Transport Dimension



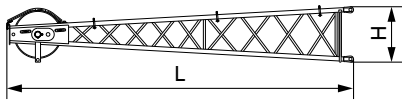
Upper counterweight block ×1

Length (L)	3.00m
Width (w)	0.94m
Height (H)	0.80m
Weight	5.4t



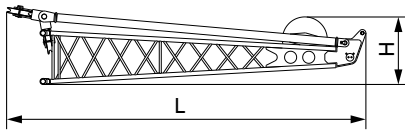
Carbody counterweight ×2

Length (L)	1.40m
Width (w)	0.72m
Height (H)	0.50m
Weight	1.0t



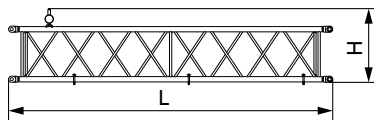
Fixed jib top ×1

Length (L)	3.38m
Width (w)	0.70m
Height (H)	0.55m
Weight	0.15t



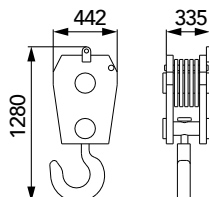
Fixed jib base with strut ×1

Length (L)	3.57m
Width (w)	0.61m
Height (H)	0.78m
Weight	0.25t



3.05m fixed jib ×3

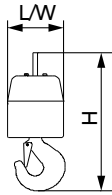
Length (L)	3.11m
Width (w)	0.62m
Height (H)	0.70m
Weight	0.1t



30t hook ×1

Length (L)	0.33m
Width (w)	0.44m
Height (H)	1.28m
Weight	0.3t

Transport Dimension



5t hook	× 1
Length (L)	0.24m
Width (w)	0.24m
Height (H)	0.66m
Weight	0.09t

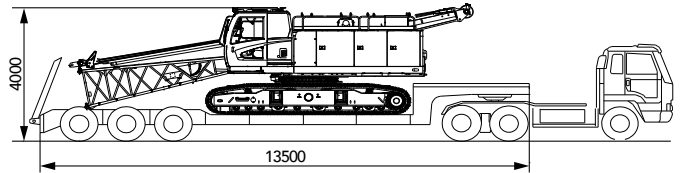
Note:

1. The transport dimensions of each part in the table are schematic, not proportional to the real parts. The dimensions are designed value without package considered.
2. The Weight is designed value that the actual manufactured part may deviate a little.

Transport Plan

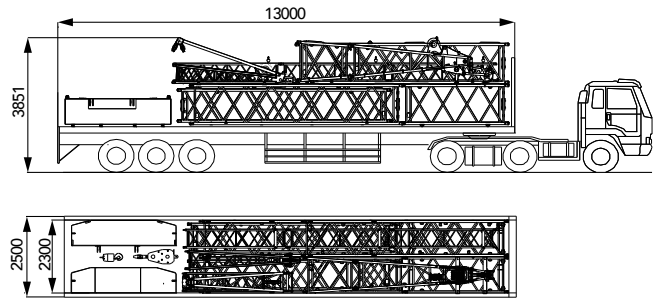
Trailer 1

Part(s)	<ul style="list-style-type: none"> Basic Machine Mode 1(with carbody counterweight)
Weight	<ul style="list-style-type: none"> 25.7t



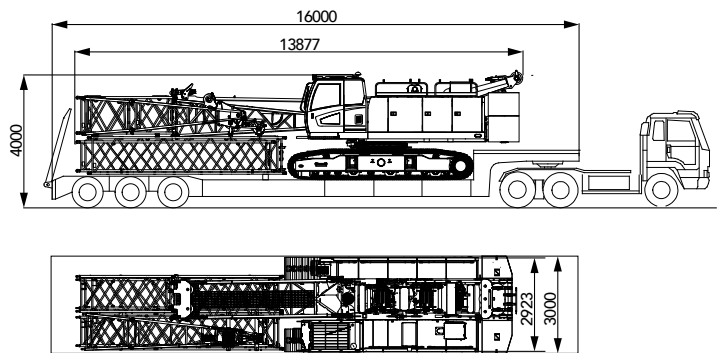
Trailer 2

Part(s)	<ul style="list-style-type: none"> 6m boom insert×3 6m boom insert(small)×2 3m boom insert×2 Boom top×1 1.5m tapered insert×1 3.05m fixed jib×3 Fixed jib base with strut×1 Fixed jib top×1 30t hook×1 5t hook×1 Upper counterweight block×1 Counterweight tray×1
Weight	<ul style="list-style-type: none"> 16t



One-trailer Transport Plan

Part(s)	<ul style="list-style-type: none"> H37m Basic Machine×1 6m boom insert×2 6m boom insert(small)×2 3m boom insert×1 Boom top×1 1.5m tapered insert×1 30t hook×1 5t hook×1 Upper counterweight block×1 Counterweight tray×1
Weight	<ul style="list-style-type: none"> 40.9t





SCC500A SANY CRAWLER CRANE 50 TONS LIFTING CAPACITY

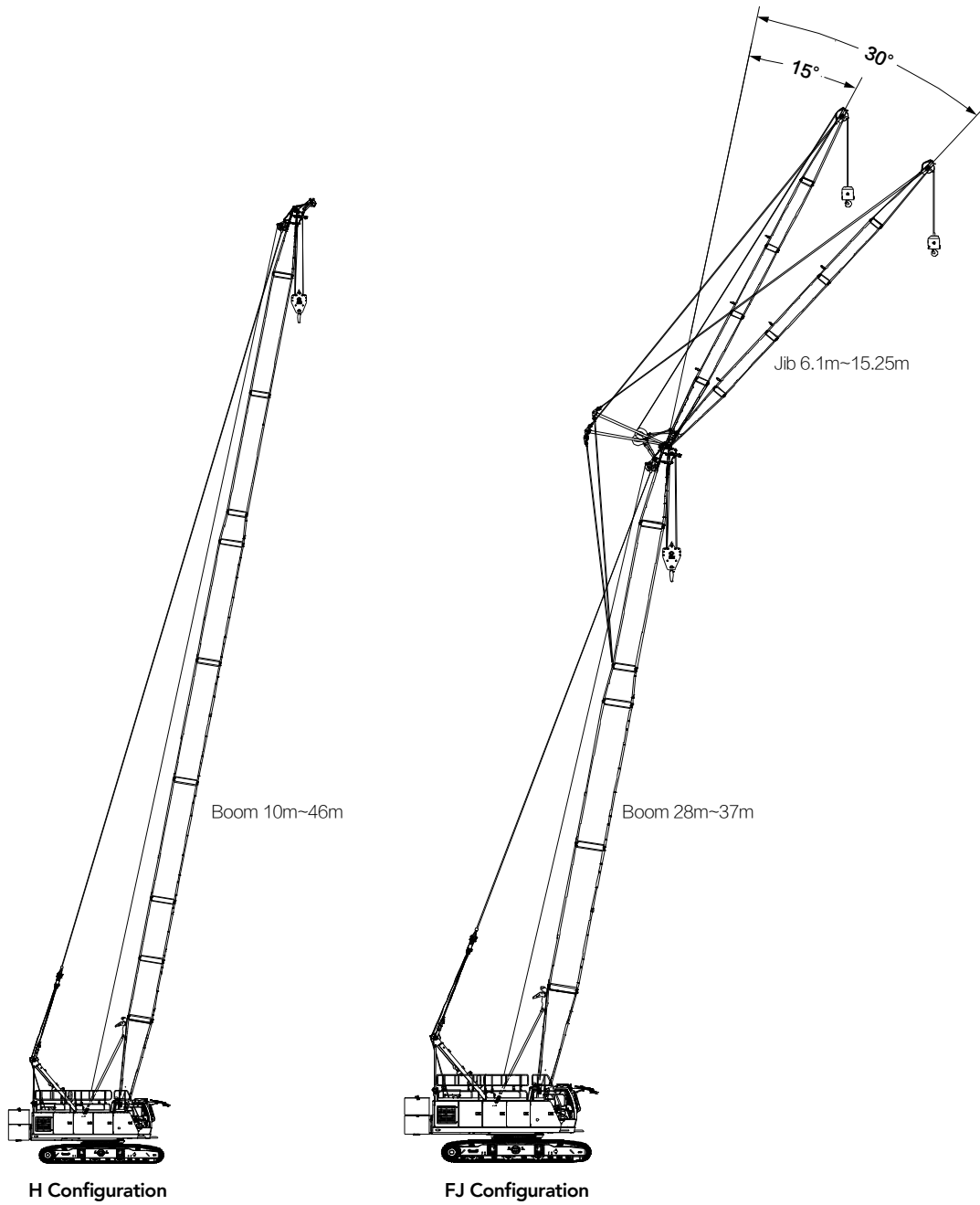
QUALITY CHANGES THE WORLD

Boom Combination

- Page 18 H Configuration
- Page 22 FJ Configuration

> 17

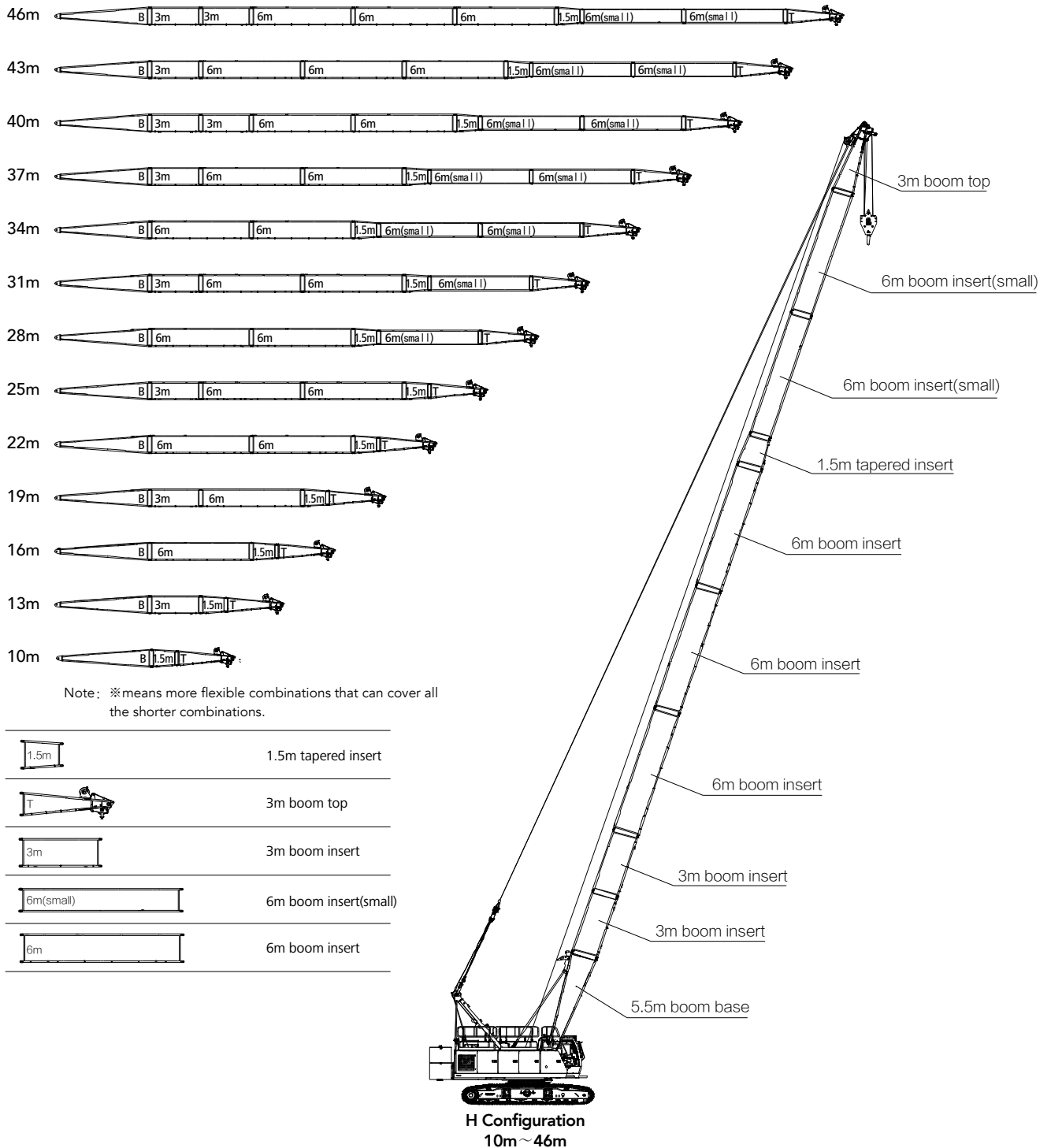
Boom Combination



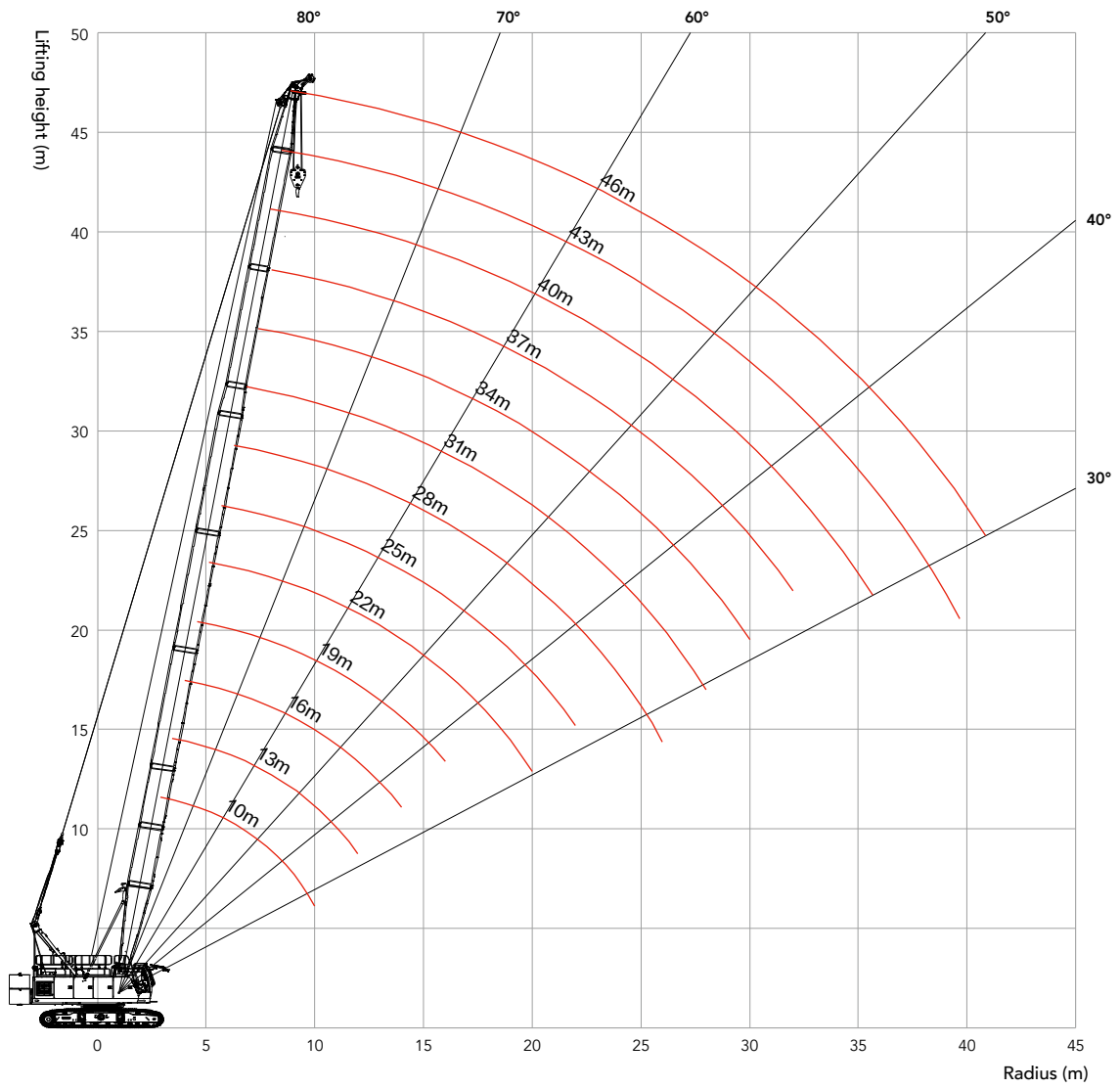
Configuration	Boom Combination	Boom Length
H	Boom	10m-46m
FJ	Boom + Fixed jib	(28m-37m)+(6.1m-15.25m)

Note: The schematics above are just reference for loading only.

H Configuration



H Working Radius



Unit: t

Load chart-H

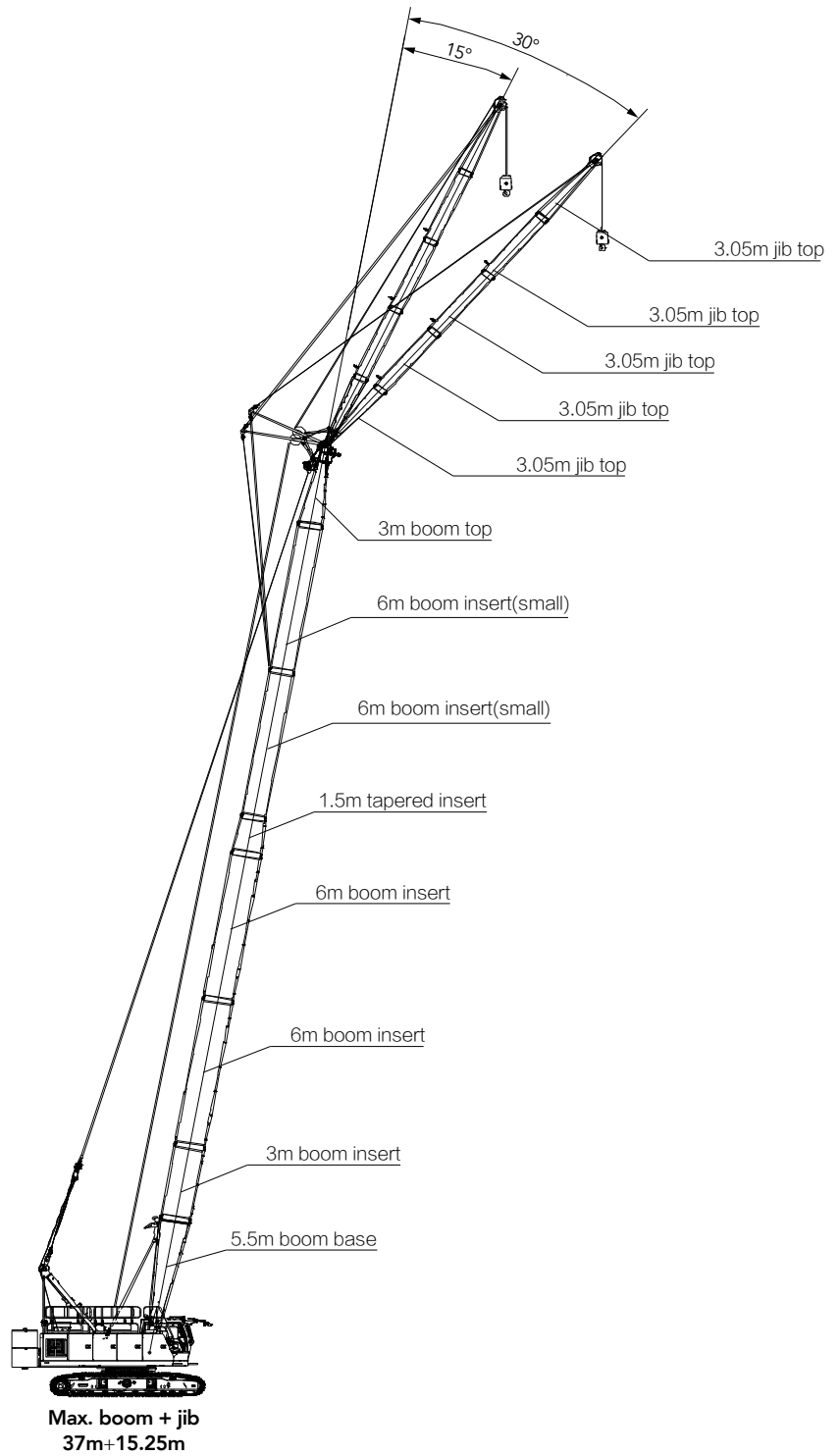
Load chart -H														
Rear counterweight 12.4t, Carbody counterweight 2t) 0°slope														
R(m) \ BL(m)	10	13	16	19	22	25	28	31	34	37	40	43	46	BL(m) \ R(m)
3.3	50													3.3
4	42.5	39.8	33											4
5	31.9	31.4	30.1	28.5	23.7									5
6	23.8	23.9	23.9	23	22.1	21	17.7							6
7	19	19	19	18.9	18.6	18	16.8	15.8	13.6					7
8	15.7	15.7	15.7	15.6	15.6	15.4	15.1	14.6	12.8	11.8	10.8			8
9	13.4	13.3	13.3	13.3	13.3	13.2	13.2	12.8	12	11	10.2	9.4	8.1	9
10		11.6	11.6	11.5	11.5	11.4	11.4	11.3	11.1	10.4	9.5	8.7	7.8	10
11		10.2	10.2	10.1	10.1	10	10	9.9	9.9	9.6	8.9	8.2	7.5	11
12		9.1	9.1	9	9	8.9	8.9	8.8	8.8	8.7	8.3	7.7	7	12
14			7.4	7.4	7.3	7.2	7.2	7.1	7.1	7	7	6.8	6.1	14
16				6.2	6.1	6	6	5.9	5.9	5.8	5.8	5.7	5.4	16
18					5.2	5.1	5.1	5	5	4.9	4.8	4.8	4.7	18
20						4.4	4.4	4.3	4.3	4.2	4.1	4.1	4	20
22						3.9	3.9	3.8	3.8	3.7	3.6	3.5	3.4	22
24							3.4	3.3	3.3	3.2	3.1	3.1	3	24
26								2.9	2.9	2.8	2.7	2.7	2.6	26
28									2.6	2.5	2.4	2.3	2.2	28
30									2.3	2.2	2.1	2.1	2	30
32										2	1.9	1.8	1.7	32
34											1.7	1.6	1.5	34
36												1.4	1.3	36
38													1.2	38

Note-Rate load of crane

1. The rated capacity in the load charts are calculated when the crane is parking on the firm ground, and lifting the load slowly and steadily.
2. The rated capacity values in the load charts are obtained when the wind speed is lower than 9.8 m/s.
3. The gray-shaded values in boom load chart are determined by boom strength.
4. The rated capacity in the load charts includes the weight of lifting hook and other riggings.
5. The crawlers must be extended during lifting.
6. All values in the load charts are valid for 360° slewing.
7. The load charts are references for loading only, which is subjected to the latest update version.

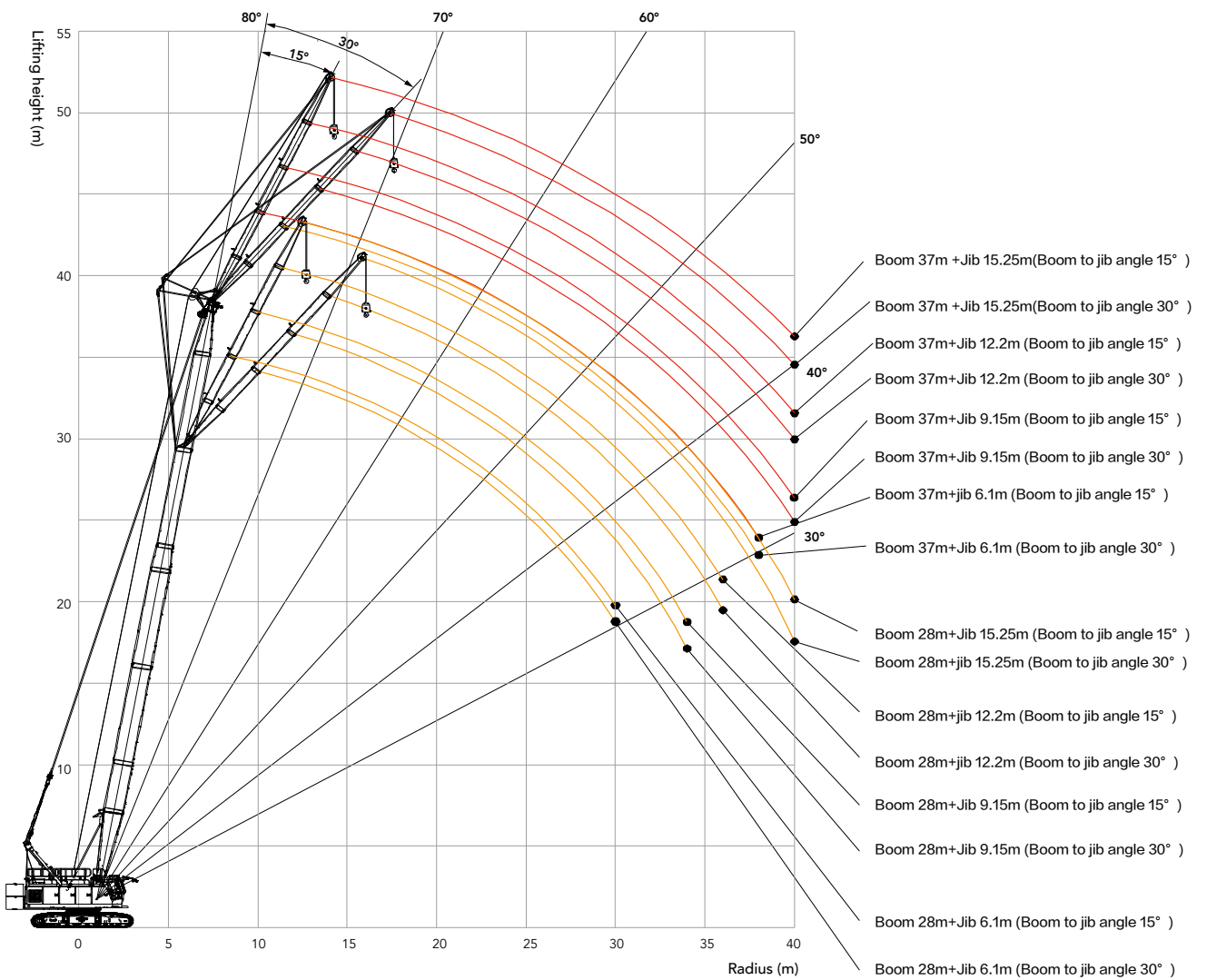
FJ Combination

FJ Combination	
Jib length(m)	Insert 6 m
6.1	-
9.15	1
12.2	2
15.25	3



Unit: t

FJ Working Radius



Load chart-FJ

Note: The load charts are reference for loading only.

Load chart -FJ 1/8(Boom 28~37m, Rear counterweight 12.4t, Carbody counterweight 2t, 0°slope)
Boom to jib angle 15°, Jib 6.1m

R(m) \ BL(m)	28	31	34	37	BL(m) \ R(m)
9	5	5			9
10	5	5	5	5	10
11	5	5	5	5	11
12	5	5	5	5	12
14	5	5	5	5	14
16	5	5	5	5	16
18	5	5	4.9	4.9	18
20	4.3	4.3	4.2	4.1	20
22	3.8	3.7	3.6	3.6	22
24	3.3	3.2	3.2	3.1	24
26	2.9	2.8	2.8	2.7	26
28	2.6	2.5	2.4	2.3	28
30	2.3	2.2	2.1	2.1	30
32		1.9	1.9	1.8	32
34			1.7	1.6	34
36			1.5	1.4	36
38				1.2	38
Counterweight(t)	12.4	12.4	12.4	12.4	Counterweight(t)

Load chart -FJ 2/8(Boom 28~37m, Rear counterweight 12.4t, Carbody counterweight 2t, 0°slope)
Boom to jib angle 30°, Jib 6.1m

R(m) \ BL(m)	28	31	34	37	BL(m) \ R(m)
10	5	5			10
11	5	5	5	5	11
12	5	5	5	5	12
14	5	5	5	5	14
16	5	5	5	5	16
18	5	5	5	5	18
20	4.4	4.3	4.3	4.2	20
22	3.8	3.7	3.7	3.6	22
24	3.3	3.2	3.2	3.1	24
26	2.9	2.8	2.8	2.7	26
28	2.6	2.5	2.5	2.4	28
30	2.3	2.2	2.2	2.1	30
32		1.9	1.9	1.8	32
34			1.7	1.6	34
36			1.5	1.4	36
38				1.2	38
Counterweight(t)	12.4	12.4	12.4	12.4	Counterweight(t)

Unit: t

Load chart-FJ

Load chart -FJ 3/8						
(Boom 28~37m, Rear counterweight 12.4t, Carbody counterweight 2t, 0°slope) 3/8						
Boom to jib angle 15°, Jib 9.15m						
R(m) \ BL(m)	28	31	34	37	BL(m) \ R(m)	
10	5	5			10	
11	5	5	5	5	11	
12	5	5	5	5	12	
14	5	5	5	5	14	
16	5	5	5	5	16	
18	5	5	5	4.9	18	
20	4.4	4.3	4.3	4.2	20	
22	3.8	3.7	3.7	3.6	22	
24	3.3	3.3	3.2	3.1	24	
26	2.9	2.9	2.8	2.7	26	
28	2.6	2.5	2.5	2.4	28	
30	2.3	2.2	2.2	2.1	30	
32	2	2	1.9	1.8	32	
34	1.8	1.7	1.7	1.6	34	
36		1.5	1.5	1.4	36	
38			1.3	1.2	38	
40				1.1	40	
Counterweight(t)	12.4	12.4	12.4	12.4	Counterweight(t)	

Load chart -FJ 4/8						
(Boom 28~37m, Rear counterweight 12.4t, Carbody counterweight 2t, 0°slope)						
Boom to jib angle 30°, Jib 9.15m						
R(m) \ BL(m)	28	31	34	37	BL(m) \ R(m)	
12	5	5			12	
14	5	5	5	4.9	14	
16	4.9	4.8	4.8	4.7	16	
18	4.7	4.6	4.6	4.5	18	
20	4.5	4.4	4.4	4.3	20	
22	3.9	3.8	3.8	3.7	22	
24	3.4	3.3	3.3	3.2	24	
26	3	2.9	2.9	2.8	26	
28	2.6	2.6	2.5	2.5	28	
30	2.3	2.3	2.2	2.2	30	
32	2.1	2	2	1.9	32	
34	1.8	1.8	1.7	1.7	34	
36		1.5	1.5	1.4	36	
38			1.3	1.3	38	
40				1.1	40	
Counterweight(t)	12.4	12.4	12.4	12.4	Counterweight(t)	

Note: The gray color parts are determined by boom strength.

Load chart-FJ

Note: The load charts are reference for loading only.

Load chart -FJ 5/8(Boom 28~37m, Rear counterweight 12.4t, Carbody counterweight 2t, 0°slope) 5/8
Boom to jib angle 15°, Jib 12.2m

R(m) \ BL(m)	28	31	34	37	BL(m) \ R(m)
11	5				11
12	5	5	5		12
14	5	5	5	4.9	14
16	4.8	4.7	4.7	4.6	16
18	4.5	4.5	4.5	4.4	18
20	4.2	4.2	4.3	4.2	20
22	3.8	3.8	3.7	3.7	22
24	3.4	3.3	3.2	3.2	24
26	3	2.9	2.8	2.8	26
28	2.6	2.5	2.5	2.4	28
30	2.3	2.2	2.2	2.1	30
32	2.1	2	2	1.9	32
34	1.8	1.8	1.7	1.6	34
36	1.6	1.6	1.5	1.4	36
38		1.4	1.3	1.3	38
40			1.2	1.1	40
Counterweight(t)	12.4	12.4	12.4	12.4	Counterweight(t)

Note: The gray color parts are determined by boom strength.

Load chart -FJ 6/8(Boom 28~37m, Rear counterweight 12.4t, Carbody counterweight 2t, 0°slope) 6/8
Boom to jib angle 30°, Jib 12.2m

R(m) \ BL(m)	28	31	34	37	BL(m) \ R(m)
14	4.1	4			14
16	3.9	3.8	3.9	3.7	16
18	3.8	3.7	3.7	3.6	18
20	3.6	3.5	3.6	3.5	20
22	3.5	3.4	3.5	3.4	22
24	3.4	3.3	3.3	3.3	24
26	3	3	2.9	2.9	26
28	2.7	2.6	2.6	2.5	28
30	2.4	2.3	2.3	2.2	30
32	2.1	2	2	1.9	32
34	1.9	1.8	1.8	1.7	34
36	1.7	1.6	1.6	1.5	36
38		1.4	1.4	1.3	38
40		1.2	1.2	1.1	40
Counterweight(t)	12.4	12.4	12.4	12.4	Counterweight(t)

Note: The gray color parts are determined by boom strength.

Unit: t

Load chart-FJ

Load chart -FJ 7/8						
(Boom 28~37m, Rear counterweight 12.4t, Carbody counterweight 2t, 0°slope) 7/8						
Boom to jib angle 15°, Jib 15.25m						
R(m) \ BL(m)	28	31	34	37	BL(m) \ R(m)	
14	4.3	4.3	4.3	4.1	14	
16	4	4	4	3.9	16	
18	3.8	3.7	3.8	3.7	18	
20	3.6	3.6	3.6	3.5	20	
22	3.4	3.4	3.4	3.4	22	
24	3.2	3.2	3.3	3.2	24	
26	3	2.9	2.9	2.8	26	
28	2.6	2.6	2.5	2.4	28	
30	2.4	2.3	2.2	2.2	30	
32	2.1	2	2	1.9	32	
34	1.9	1.8	1.7	1.7	34	
36	1.7	1.6	1.5	1.5	36	
38	1.5	1.4	1.4	1.3	38	
40	1.3	1.2	1.2	1.1	40	
Counterweight(t)	12.4	12.4	12.4	12.4	Counterweight(t)	

Note: The gray color parts are determined by boom strength.

Load chart -FJ 8/8						
(Boom 28~37m, Rear counterweight 12.4t, Carbody counterweight 2t, 0°slope) 8/8						
Boom to jib angle 30°, Jib 15.25m						
R(m) \ BL(m)	28	31	34	37	BL(m) \ R(m)	
16	3.3	3.2			16	
18	3.1	3	3.1	3	18	
20	3	2.9	2.9	2.9	20	
22	2.9	2.8	2.8	2.8	22	
24	2.7	2.7	2.7	2.7	24	
26	2.7	2.6	2.7	2.6	26	
28	2.6	2.5	2.6	2.6	28	
30	2.4	2.4	2.3	2.3	30	
32	2.2	2.1	2.1	2	32	
34	1.9	1.9	1.8	1.8	34	
36	1.7	1.6	1.6	1.5	36	
38	1.5	1.4	1.4	1.3	38	
40	1.3	1.3	1.2	1.2	40	
Counterweight(t)	12.4	12.4	12.4	12.4	Counterweight(t)	

Note: The gray color parts are determined by boom strength.



Zhejiang SANY Equipment Co., Ltd.

SANY Industrial Park, No. 2087 Daishan Road, Wuxing District, Huzhou City,
Zhejiang Province, P. R. of China Zip 313028
After-sales Service 400 887 8318
Consulting 400 887 9318

— Agent information —

Due to updated technology, the technical parameters and configurations are subject to change without prior notice. The machine in the picture may include additional equipment. This album is for reference only, subject to the object.
All rights reserved for Sany, without the written permission of Sany, the contents of any part of this content shall not be copied or copied for any purpose.

© Printed in December 2020 in China

www.sany.com.cn



Please scan the official
WeChat account of Sany
for more information.

Courtesy of CraneMarket.com